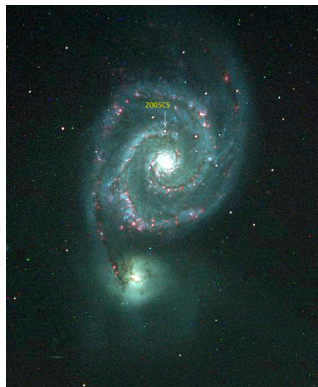


# Astronomy



Mar 28 - Apr 1

## Classwork

## Homework

*Monday*  
28

Solar altitude - end of lunch (if possible)

Open lab / project

*Monday Evening*

Observe / project

*Tuesday*  
29

Solar altitude - end of lunch (if possible)

Classifying galaxies

Hubble law

*Tuesday Evening*

Read 17.2

Questions 5-8

Problems 4, 5

*Wednesday*  
30

Solar altitude - end of lunch (if possible)

Problem solving

*Wednesday Evening*

Problem set 17.1

*Thursday*  
31

Solar altitude - end of lunch (if possible)

Evolution of galaxies

*Thursday Evening*

Read 17.3

Questions 9-12

Problems 6, 7

*Friday*  
1

Solar altitude - end of lunch (if possible)

Open lab / project

*Weekend*

Solar altitude at ~1PM (if possible)

Observe

Project