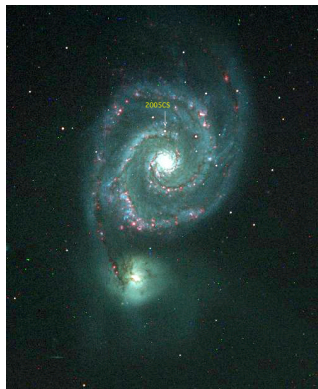


# Astronomy



Feb 28 - Mar 4

## Classwork

## Homework

*Monday*  
28

Open lab

*Monday Evening*

Problem set 14.1

*Tuesday*  
1

Chapter 14 review

HOU: Using the H-R diagram (start)

*Tuesday Evening*

Read 15.1

Questions 1-4

Problems 1-3

*Wednesday*  
2

Neutron stars, pulsars, black holes

HOU: Using the H-R diagram

*Wednesday Evening*

Observe

*Thursday*  
3

Albireo lab

*Thursday Evening*

Read 15.2

Questions 5-8

Problems 4-6

*Friday*  
4

Open lab

*Weekend*

Observe/catch up

CH. 13-15 TEST NEXT WEEK!